

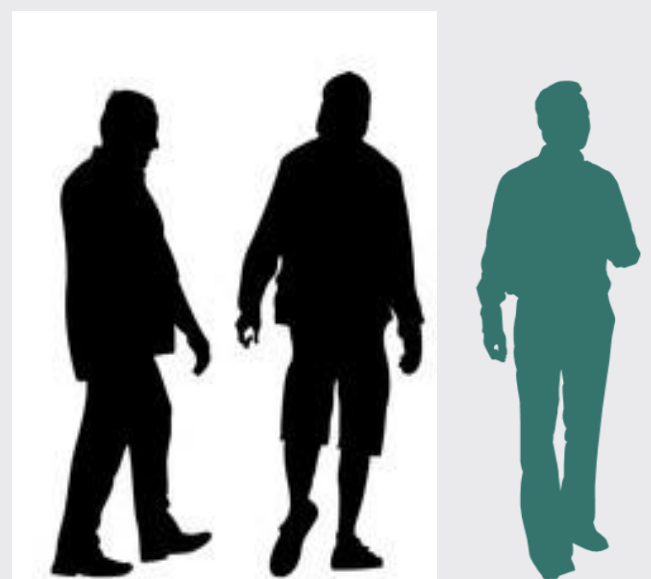
Many providers and organisations – one patient

ONE ONLINE DOORWAY TO HOLISTIC HEALTH SERVICES

helsenorge.no

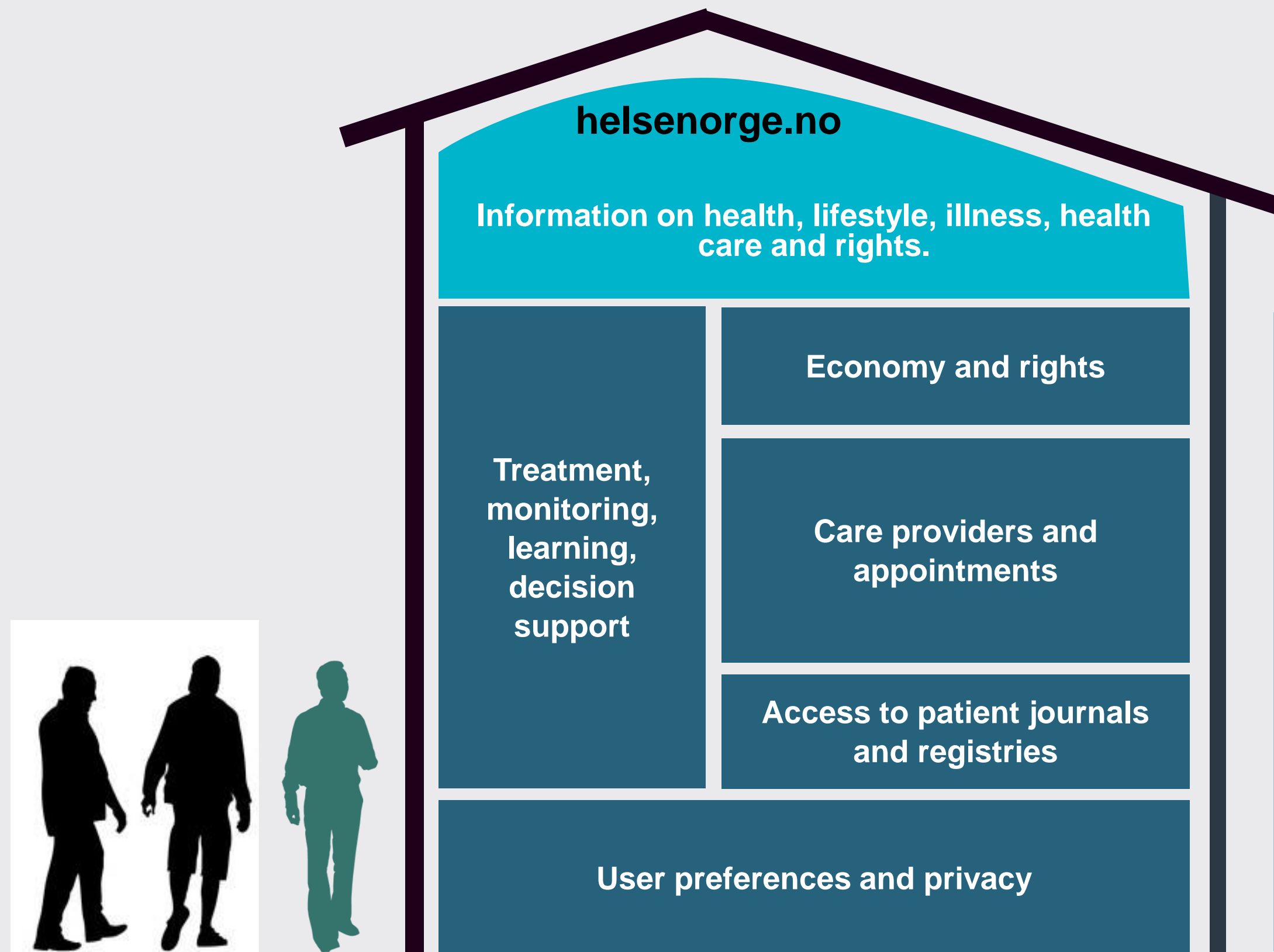
Open services: Information on health, lifestyle, illness, health care and rights.

Services that require authentication



Many providers and organisations – one patient

ONE ONLINE DOORWAY TO HOLISTIC HEALTH SERVICES

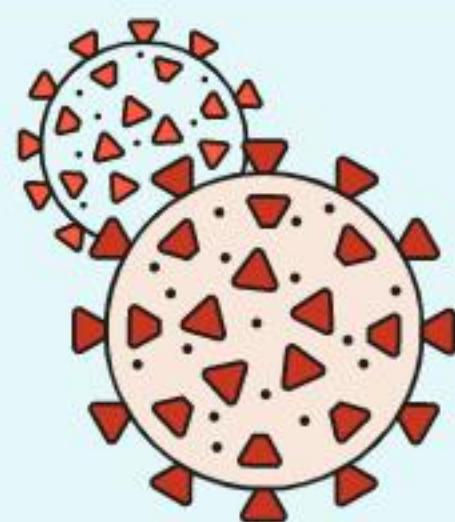


Hei,
hva vil du gjøre?

Send en melding →

Bestill en time →

Forny en resept →



Koronavirus

Vi har samlet og svarer på de vanligste spørsmålene om koronaviruset. Du kan også bruke chatboten nederst på siden.

Finne informasjon om covid-19 →



Koronaverktøy

Hjelp til å stoppe spredningen av viruset.



Innboks

Meldinger og brev fra helsetjenesten.



Timeavtaler

Timer og avtaler med helsetjenesten.



Henvisninger

Henvisninger til sykehus eller spesialist.



Legemidler

Resepter på medisiner og utstyr.



Pasientjournal

Journaldokumenter fra sykehus.



Helsekontakter

Behandlere og kontaktpersoner.



Prøvesvar

Resultat av test for koronavirus.



Frikort og egenandeler

Registrerte egenandeler og frikortstatus.



Pasientreiser

Søk om å få dekket en reise til behandling.



Bytte fastlege

Finne og bytt fastlege, eller stå på venteliste.



Velg behandlingssted

Ventetider og informasjon om behandlingssteder.



Helsenorge

helsenorge.no

SELECT AN ELECTRONIC ID



BankID

With codes from your bank



Buypass

Use smart card and card reader



Commfides

Use your USB stick



BankID on Mobile

With secure authentication on your mobile



[How to obtain an electronic ID](#)

[Contact form](#) | [Tel: 800 30 300](#) | [Help to log in](#) | [Security and privacy](#)

Operated by the Agency for Public Management and e-Government (Difi)

Hei, Heather

You have new messages

Your GP is August (Ddfl) September at the DDFL CGM Test

make an appointment	Renew prescription	Start e-consultation
Contact the doctor's office	Video consultation	

Information from the doctor's office

2020-04-08 This info is taken from Bedr.Reg. under the section Opening hours

[See information about your GP](#)

[See all your health contacts](#)



Corona tools

Help stop the spread of the virus.



Inbox

Messages and letters from the health service.



Appointments

Hours and appointments with the health service.



Referrals

Referrals to a hospital or specialist.



Medications

Prescriptions for medicines and equipment.



Test results

Coronavirus test result.



Health contacts

Therapists and contacts.



Patient record

Journal documents from hospitals.



Vaccines

Overview of registered vaccines



Patient travel

Apply for a travel trip for treatment



Exemption card and deductibles

Registered deductibles



Change your appointed physician

Find and change GP

Helsenorge

helsenorge.no

SELECT AN ELECTRONIC ID



BankID

With codes from your bank



Buypass

Use smart card and card reader



Commfides

Use your USB stick



BankID on Mobile

With secure authentication on your mobile



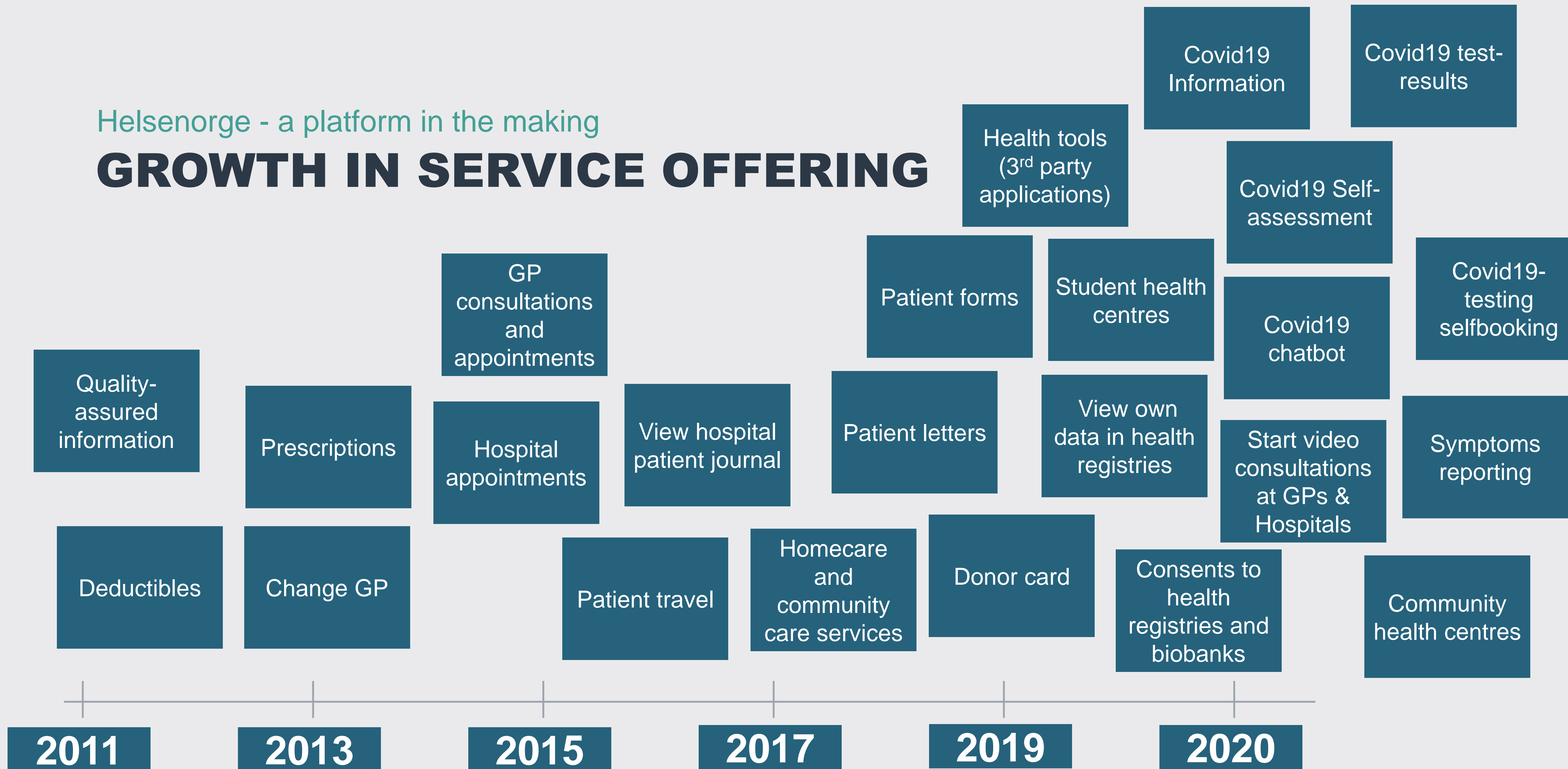
[How to obtain an electronic ID](#)

[Contact form](#) | [Tel: 800 30 300](#) | [Help to log in](#) | [Security and privacy](#)

Operated by the Agency for Public Management and e-Government (Difi)

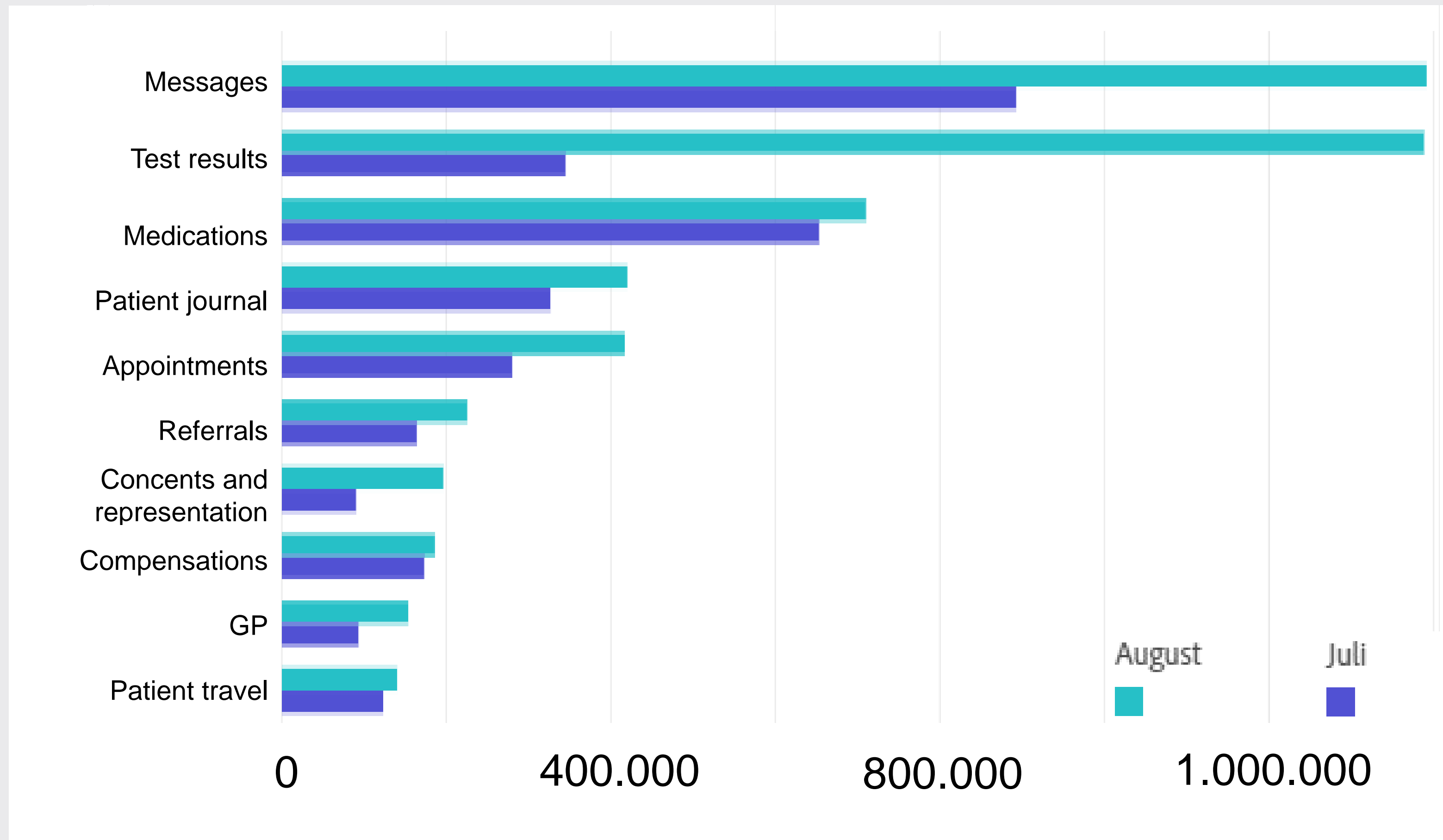
Helsenorge - a platform in the making

GROWTH IN SERVICE OFFERING



Variations depending on population needs

TEN MOST POPULAR LOG-IN SERVICES



HELSE NORGE meny søk Heather Margaret Summer Logg ut

Hei, Heather

You have new messages

Your GP is August (Ddf) September at the DDFL CGM Test

- make an appointment
- Renew prescription
- Start e-consultation
- Contact the doctor's office
- Video consultation

Information from the doctor's office
2020-04-08 This info is taken from Bedr.Reg. under the section Opening hours

See information about your GP >

See all your health contacts >

- Corona tools**
Help stop the spread of the virus.
- Inbox**
Messages and letters from the health service.
- Appointments**
Hours and appointments with the health service.
- Referrals**
Referrals to a hospital or specialist.
- Medications**
Prescriptions for medicines and equipment.
- Test results**
Coronavirus test result.
- Health contacts**
Therapists and contacts.
- Patient record**
Journal documents from hospitals.
- Vaccines**
Overview of registered vaccines.
- Patient travel**
Apply for a travel trip for treatment.
- Exemption card and deductibles**
Registered deductibles and exemption card status.
- Change your appointed physician**
Find and change GP, or be on a waiting list.
- Illness and critical info**
Important information for healthcare professionals.
- Documents**
Own documents stored at Helsenorge.
- Donor card**
Digital donor card for organ donation.
- Tool**
Courses and other tools for learning and mastering.